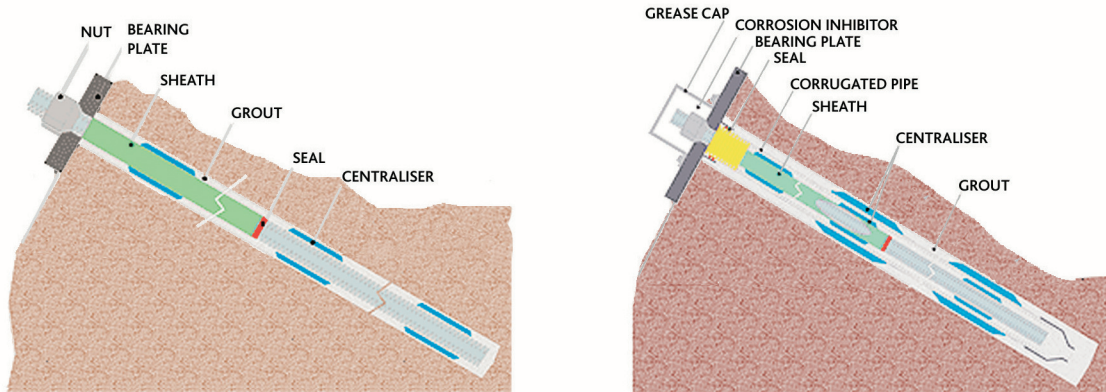
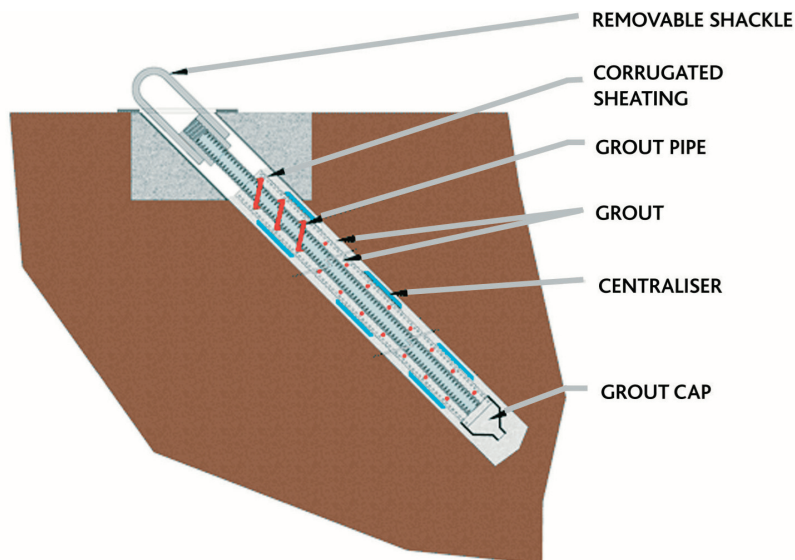


ROCK BOLTS



BAR SPECIFICATION

Steel grade (N/mm ²)	Diameter (mm)	Yield load (kN)	Ultimate load (kN)
950/1050	26.5	525	580
950/1050	32	760	850
950/1050	36	1020	1070
500/550	40	628	691
500/550	50	982	1080
555/700	63.5	1756	2217



Accessible Anchor with removable shackle

SABS
ISO 9001

HEAD OFFICE
670 Power Road,
Industries West
Germiston, 1450
Tel 011 876 5040
Fax 011 873 3532

GERMISTON
670 Power Road,
Industries West
Germiston, 1450
Tel 011 876 5549
Fax 011 873 5325

www.duraset.com



DURASET

THE AVENG GROUP